



# Accelerating the Internet of Things

---

Oren Pinsky  
Director, New Business Development  
May, 16th, 2017

@qualcomm #whywait  
oren@qualcomm.com



# We connected the phone to the Internet

---

Now we are connecting  
everything around us

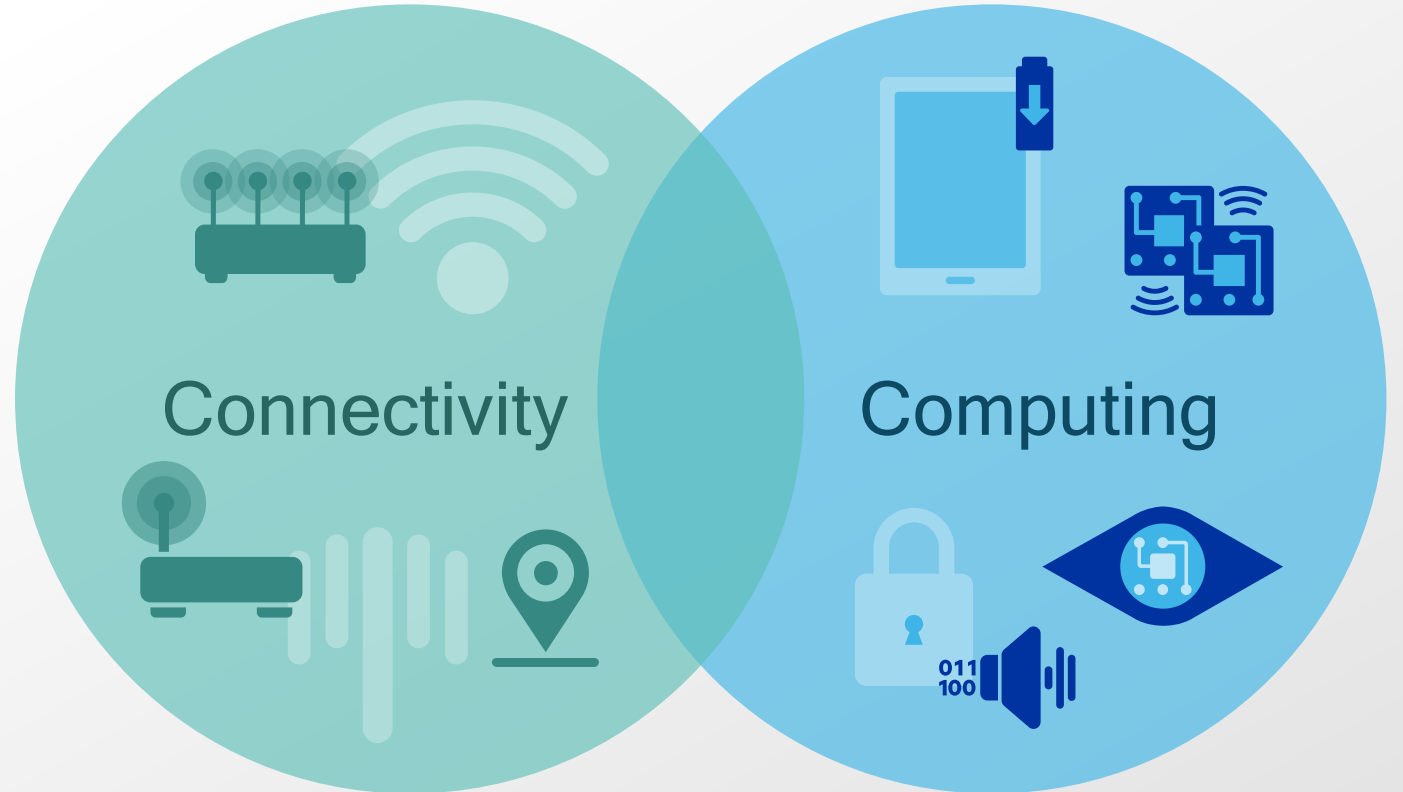


# Billions of connections



# Mobile technology will drive the Internet of Things

Speed and scale of innovation  
will fuel progress



# Smart platforms key to success of the IoT



Qualcomm®  
Snapdragon™ Smart  
Home Reference  
Platform



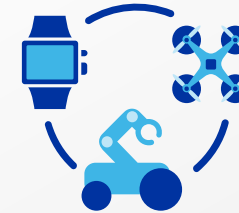
Qualcomm®  
Snapdragon Flight™  
drone platform



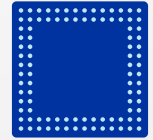
Qualcomm®  
Snapdragon™ IP  
Camera Platform



Qualcomm®  
Headset Platform



IoT Development  
Platform



DragonBoard™ 410c



Smart Lighting  
Platform



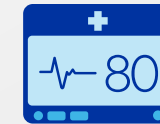
Qualcomm®  
Snapdragon™ Wear  
Wearables Platform



Qualcomm®  
AllPlay™ Smart  
Media Platform



Home Automation  
Connectivity  
Modules



Medical-Grade 2net™  
Connectivity Platform



Qualcomm®  
Smart Gateway

## Enabling SMEs to quickly bring connected products to market



# The future of transportation: smart, connected, and safer

Vehicle-to-vehicle communication



Smart traffic lights



3G/4G cellular  
Vehicle-to-cloud communication



Vehicle to pedestrian



Wireless vehicle charging



Vehicle to bicyclist



Road sensors



Emergency alert to infrastructure





# Accelerating wearables

---

 Sports watches

 Smart glasses

 Smartwatch

 Headsets

 Kid trackers





# Transforming health care

---

Creating a world with access to  
health care anytime, anywhere





# Advancing robots and drones

---

Intelligence and  
integration









# Turning cities into smart cities

Smart building management



Building as a platform



Distributed renewables integration



Smart parking meters and garages



Demand response

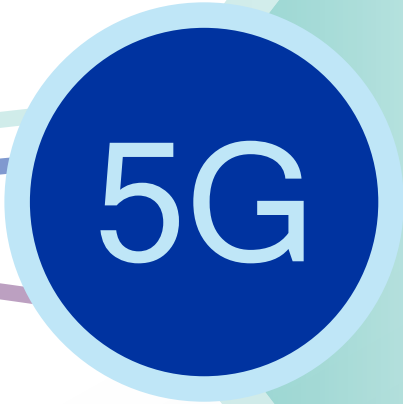


Wireless vehicle charging



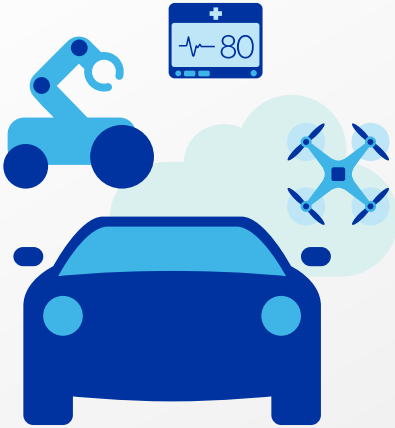


# Providing a unified connectivity fabric



Enhanced mobile  
broadband

Multi-Gbps data rates | Deep awareness  
Extreme capacity | Uniformity



Mission-critical  
services

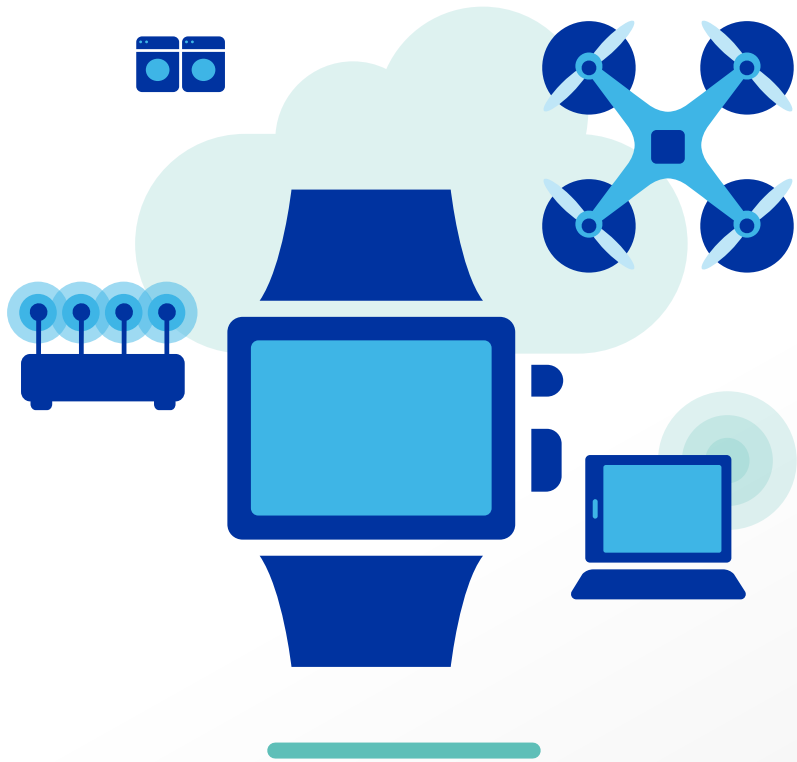
Ultra-low latency | High availability  
High reliability | Strong security



Massive Internet  
of Things

Low cost | High density  
Ultra-low energy | Deep coverage





## Collaborating to accelerate the IoT

Advance effective spectrum management policies

Support technology neutral policies

Promote global, industry-led, voluntary  
standardization efforts

Encourage public and private sector dialog

Stimulate investment in the IoT and streamline  
deployment of wireless infrastructure

# Thank you

---

Follow us on:    

For more information, visit us at:

[www.qualcomm.com](http://www.qualcomm.com) & [www.qualcomm.com/blog](http://www.qualcomm.com/blog)

Nothing in these materials is an offer to sell any of the components or devices referenced herein.

©2016 Qualcomm Incorporated and/or its subsidiaries. All Rights Reserved.

Qualcomm, Snapdragon, DragonBoard, and Wireless Reach are trademarks of Qualcomm Incorporated, registered in the United States and other countries. Snapdragon Flight and Snapdragon Wear are trademarks of Qualcomm Incorporated. AllPlay is a trademark of Qualcomm Connected Experiences, Inc., registered in the United States and other countries. Other products and brand names may be trademarks or registered trademarks of their respective owners.

References in this presentation to “Qualcomm” may mean Qualcomm Incorporated, Qualcomm Technologies, Inc., and/or other subsidiaries or business units within the Qualcomm corporate structure, as applicable.

Qualcomm Incorporated includes Qualcomm’s licensing business, QTL, and the vast majority of its patent portfolio. Qualcomm Technologies, Inc., a wholly-owned subsidiary of Qualcomm Incorporated, operates, along with its subsidiaries, substantially all of Qualcomm’s engineering, research and development functions, and substantially all of its product and services businesses, including its semiconductor business, QCT.

